



ACTIVITY 12

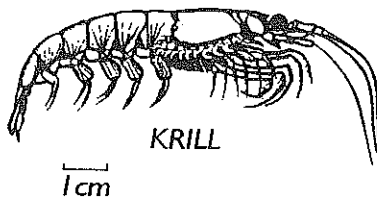
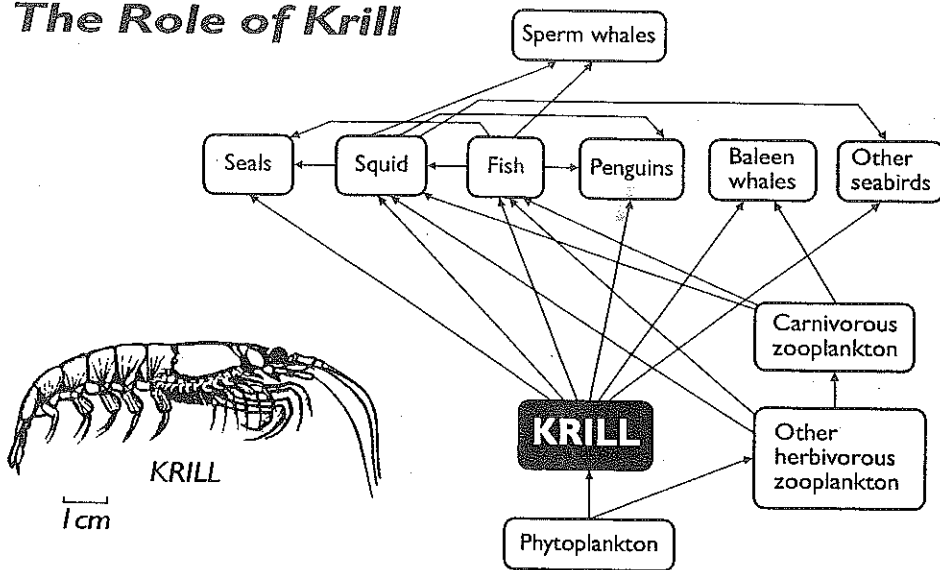
Diagram and Chart Work



A. Look at the krill diagram below and then write a paragraph of about six lines on the role krill plays in the Antarctic food chain. Write in your book. Here is a start for you:

▶ Krill form the central link in the Antarctic food chain ....

The Role of Krill



■ **Did you know?**  
Blue whales can eat two tonnes of krill a day.



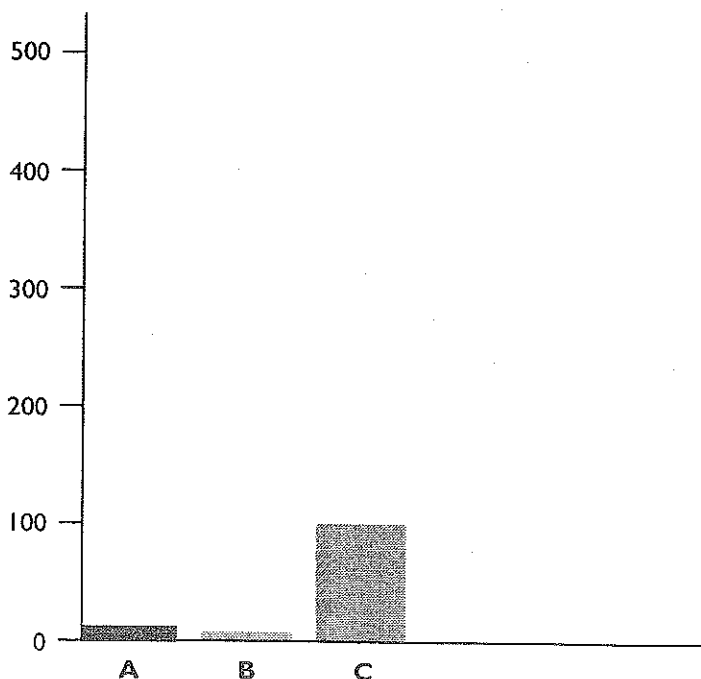
B. Finish the column graph below of baleen whale numbers by using the information on the following page. The graph has been started for you.

**Baleen Whale Numbers in Antarctic Waters, 1992**

KEY

- A = Blue
- B = Southern Right
- C = Fin
- D = \_\_\_\_\_
- E = \_\_\_\_\_

Number of Baleen Whales (thousands)





ACTIVITY 12

Diagram and Chart work (continued)

**Seals and Whales in the Antarctic Area**

SPECIES	COMMENTS	LENGTH (METRES)	NUMBERS (1992)
<b>SEAL</b>			
<b>Ross</b>	Small, bulky bodies. Eat fish and squid.	2.2	650,000
<b>Leopard</b>	Eat penguins, seals, krill. Lithe bodies with long 'killer' heads. They co-operate in packs to attack large prey.	3.6	222,000
<b>Southern Elephant</b>	Bulls huge with 'proboscis'. Cows fat and dumpy. Can dive to 1,400 metres.	4.5	700,000
<b>Crabeater</b>	Slim bodies. Eat krill.	2.6	40 million
<b>Weddell</b>	Dark, heavy bodies.	3.2	732,000
<b>Antarctic Fur</b>	Hind flippers very mobile. Eat fish/krill.	2	1.5 million
<b>BALEEN WHALES</b>			
Filter feeding baleen whales have no teeth but their mouths contain fibrous plates of baleen (whalebone) which act as giant sieves to strain plankton from sea water.			
<b>Blue whale</b>	Grey/blue. Flat, broad head. Eat krill.	30	12,000
<b>Southern Right</b>	Bulky and calloused-skinned. Eat small plankton.	17	4,000
<b>Fin</b>	Dark topside. White underside. Eat krill.	22	100,000
<b>Minke</b>	Smallest of species. Eat krill.	8	400,000
<b>Humpback</b>	Notably long flippers. Calloused skin. Eat krill.	14	5,000
<b>TOOTHED WHALES</b>			
These whales have stumpy teeth which enable them to catch large prey.			
<b>Killer/Orca</b>	Black and white. High dorsal fin. Eat anything.	8	Several thousand
<b>Sperm</b>	Massive heads. Eat squid/fish.	20	1,000,000
<b>Southern Bottlenose</b>	Pale in colour. Beaked head. Eat squid.	7	Thousands; not under threat
<b>Long-finned Pilot</b>	Black. Bulbous heads. Eat squid.	6	Not under threat

■ **Did you know?**

Krill could be one of the world's largest untapped food sources, but it is a vital link in the Antarctic food chain.

