

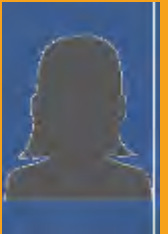
# GRADE 12 DISCOVER CHINA

Xichong Beach, Guangdong, China

October 17<sup>th</sup> to 21<sup>nd</sup> 2016

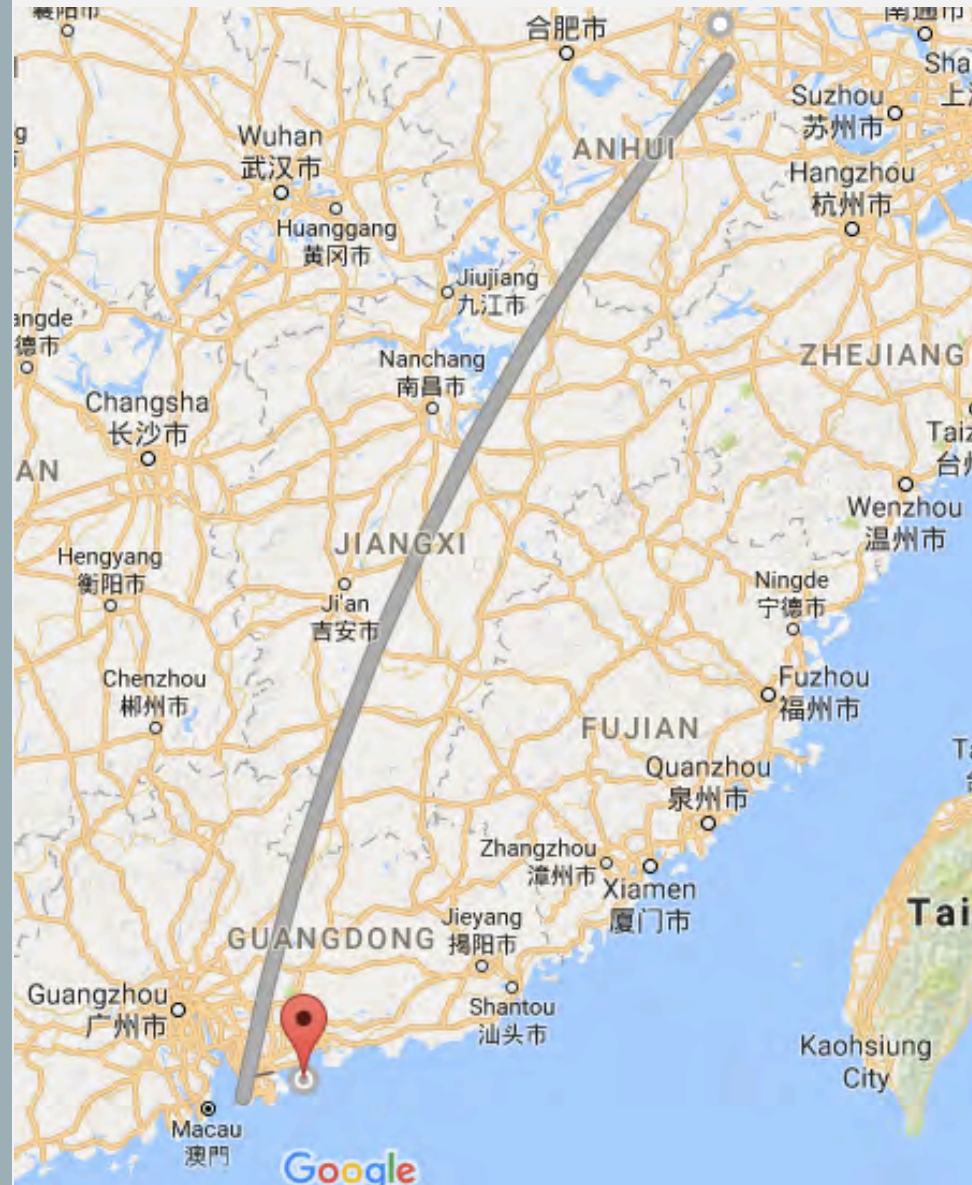


ACCOMPANYING  
FACULTY



# THE LOCATION

FLIGHT TO SHENZHEN  
BUS RIDE TO XICHONG  
BEACH



OUTDOOR  
EDUCATION  
PROGRAM PROVIDER

FIRST YEAR WORKING WITH  
NIS ON GRADE 12 TRIP



Pack a lunch from home!



# ITINERARY

DEPARTURE FROM NANJING

BUS TO THE AIRPORT: 5:15

FLIGHT CZ3578 TO SHENZHEN: 8:15

RETURN TO NANJING

FLIGHT HO1656 TO NANJING: 16:10

BUS ARRIVES AT NIS: 20:00

DAY	AM	LUNCH	PM	DINNER	NIGHT	LODGE
1	BUS TO XICHONG BEACH	IN TRANSIT	INTRO TO TEAM LEADERS & TEAM BUILDING	REST.	GOAL SETTING & SANDWATCH	HOTEL
2	SANDWATCH	REST.	SURFING	REST.	COMPASS ACTIVITY	HOTEL
3	SANDWATCH	REST.	DAPENG PENINSULA GEOPARK	WILD COOKING	CAMP SETUP	CAMP
4	COSTAL HIKE	PACKED LUNCH	HIKE / TIDEPPOOLING / NAVIGATION ACTIVITY	BEACH BBQ	DEBRIEF AND REFLECTION	HOTEL
5	COASTAL BIKING	PIZZA	BUS TO SHENZHEN AIRPORT			

# ACCOMMODATION

SILVER SEA HOLIDAY INN  
DOUBLE AND TRIPLE ROOMS

HOME BASE FOR THE ENTIRE  
WEEK  
(EVEN DURING CAMPING)





# Sandwatch

## SANDWATCH AND THE GROUP IV PROJECT

Curricular requirement for IBDP  
Experimental Science subjects

Undertaken during Discover China in  
Grade 12

Sandwatch provides a framework for school children to work together to evaluate the problems facing their beach environments.  
- K. Matsuura, Director General of UNESCO





International Baccalaureate®  
Baccalauréat International  
Bachillerato Internacional

## SANDWATCH AND THE GROUP IV PROJECT

Reflection of participation in the project is submitted as part of the candidate's coursework.

The group 4 project is a collaborative experience where students analyse a common topic or problem. The focus of this experience is on the **process**, rather than the **product**.

- Diploma Experimental Sciences subject guide.





## ACTIVITIES

STUDENTS WILL STAY ACTIVE  
THROUGHOUT THE WEEK

HIKING IN COASTAL TERRAIN  
IS WHERE STUDENTS WILL  
SPEND MOST OF THEIR TIME



# CAMPING

ONE NIGHT OF CAMPING AT  
THE BEACH.



# SURFING

## WATER SAFETY:

STUDENTS HAVE INDICATED  
THEIR SWIMMING ABILITY.

INDIER STAFF MONITOR  
STUDENTS IN THE WATER AT  
ALL TIMES.



## PACKING LIST

A DETAILED LIST SENT TO  
PARENTS AND STUDENTS VIA  
EMAIL

NO ACCESS TO LAUNDRY  
(*BAG TO KEEP DIRTY LAUNDRY  
DURING THE WEEK*)

MUST CARRY OWN LUGGAGE

ASSUME NO ACCESS TO HOTEL  
DURING THE DAY  
(*20-30L DAY PACK*)

PACK FOR AN ACTIVE TRIP

PREFER QUICK-DRY MATERIAL

1L WATER BOTTLE

# SHOES

1 PAIR OF SHOES FOR HIKING

1 PAIR OF SHOES FOR  
HOTEL/CAMP

ALWAYS CLOSED TOE



# HYDRATION

1L WATER BOTTLE

USE FOR DRINKING AT MEALS



## BEACHWEAR

### SUN SAFETY

SUNSCREEN SHOULD BE  
WORN WHEN OUTDOORS.

WHEN NOT IN THE WATER)  
STUDENTS MUST BE IN  
SHORTS/T-SHIRT.

RASH GUARD OR WATER  
SHIRT FOR SURFING.



# ELECTRONICS

NO LAPTOPS

ROOMS DO NOT HAVE SAFES







# QUESTIONS

Thank you for coming!