

First Day. [Picture]. Retrieved from <http://adamzyglus.com>



NanJing International School
An **Inclusive Learning Community**

Inspiring International Mindedness,
Personal Excellence, Creative Thinking

Welcome Parents of Grade 6-11 Students!



Nanjing International School
An **Inclusive Learning Community**

Inspiring International Mindedness,
Personal Excellence, **Creative Thinking**

Opening Day for MS/US Students...

- Meeting other new and returning students (Ambassadors)
- Meeting Advisor and teachers
- Getting familiar with Veracross and the Daily Bulletin
- Seeing their schedules
- Having a tour
- Asking questions
- Having fun!



Opening Day for MS/US Parents...

- Introduction to the Senior Education Team (SET)
- Briefing on the DP and MYP
- Meeting our Counselors
- Getting the chance to chat with other parents
- Having a look around the school, visiting the PTA Shop
- Asking questions!



A bit about our Diploma Programme...



Juan Saavedra

SET

Head of Upper School 10-12

Dr Vet Med, La Salle University, Colombia



Nanling International School
An **Inclusive Learning Community**

Inspiring International Mindedness,
Personal Excellence, Creative Thinking

A bit about our Middle Years Programme...



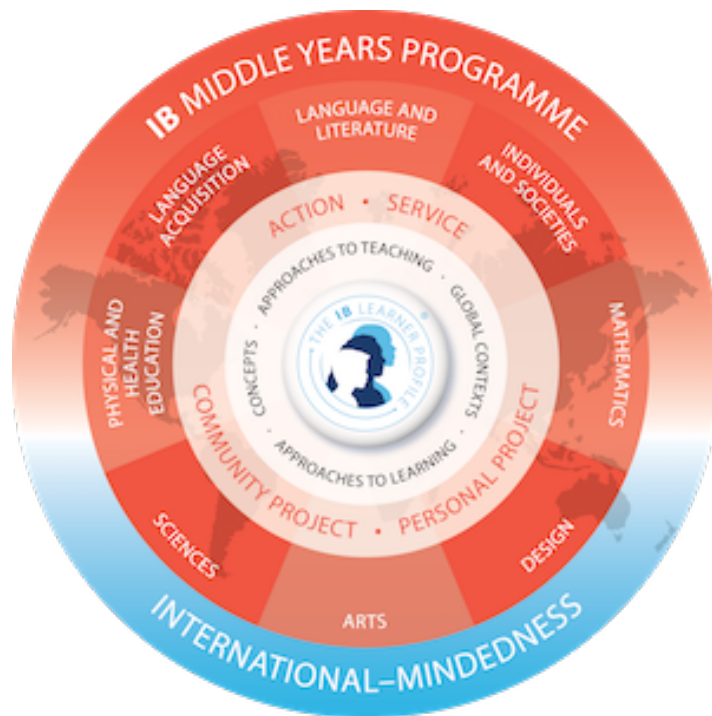
Kasson Bratton

SET

Head of Middle School 6-9

English Teacher

Masters in Education, Portland State University,
USA



NanJing International School
An **Inclusive Learning Community**

Inspiring International Mindedness,
Personal Excellence, Creative Thinking

	Day 1	Day 2	Day 3	Day 4	Day 5	Day 6	Day 7	Day 8
8 AM	10 Mathematics Extension (Period B1) Mr. Coad – D243	10 Biology (Period B1) Ms. O'Brien – D204	10 Chemistry (Period B1) Mr. Newman – D203	10 English A (Period B1) Ms. Creme – D346	10 English A (Period B1) Ms. Creme – D346	10 Humanities (Period B1) Mr. Battye – D219	10 English A (Period B1) Ms. Creme – D346	10 Physical Education (Period B1) Mr. Tyoschin – Gym 2
9 AM	10 Physical Education (Period B2) Mr. Tyoschin – Gym 2	10 Korean A (Period B2) Mr. Hwangbo – D342	10 English A (Period B2) Ms. Creme – D346	10 Mathematics Extension (Period B2) Mr. Coad – D243	10 Mandarin B Phase 5 (Period B2) Wang – D228	10 English A (Period B2) Ms. Creme – D346	10 Mandarin B Phase 5 (Period B2) Wang – D228	
10 AM	Break (Period B)	Break (Period B)	Break (Period B)	Break (Period B)	Break (Period B)	Break (Period B)	Break (Period B)	Break (Period B)
11 AM	10 Art (Period B3) Mr. Kay – Design Centre	10 Mathematics Extension (Period B3) Mr. Coad – D243	10 Chemistry (Period B3) Mr. Hornell – D201	10 Biology (Period B3) Ms. O'Brien – D204	10 Mathematics Extension (Period B3) Mr. Coad – D243	10 Biology (Period B3) Ms. O'Brien – D204	10 Biology (Period B3) Ms. O'Brien – D204	10 Korean A (Period B3) Mr. Hwangbo – D342
12 PM	10 Humanities (Period B4) Mr. Battye – D219	10 Humanities (Period B4) Mr. Battye – D219	10 Physical Education (Period B4) Mr. Tyoschin – Gym 2	10 Physical Education (Period B4) Mr. Tyoschin – Gym 2	10 Chemistry (Period B4) Mr. Newman – D203	10 Korean A (Period B4) Mr. Hwangbo – D342	10 Chemistry (Period B4) Mr. Newman – D203	10 Chemistry (Period B4) Mr. Newman – D203
1 PM	Lunch (Period L)	Lunch (Period L)	Lunch (Period L)	Lunch (Period L)	Lunch (Period L)	Lunch (Period L)	Lunch (Period L)	Lunch (Period L)
2 PM	10 Chemistry (Period B5) Mr. Hornell – D201	10 Art (Period B5) Mr. Kay – Design Centre	10 Art (Period B5) Mr. Kay – Design Centre	10 Korean A (Period B5) Mr. Hwangbo – D342	10 Humanities (Period B5) Mr. Battye – D219	10 Art (Period B5) Mr. Kay – Design Centre	10 Humanities (Period B5) Mr. Battye – D219	10 Mathematics Extension (Period B5) Mr. Coad – D243
3 PM								

Key Elements of the Schedule...

- School Day starts at 8:00am, sharp.
- School ends at 3:00pm
 - 2:30pm Dismissal on Tuesdays
- MS/US Assemblies alternative Fridays
(See calendar for dates)





Kasson Bratton

HOMEPAGE

TEACHER PORTAL

LOG OUT

[SIGN UP](#)[After School Activities →](#)

monday - aug 8	tuesday - aug 9	wednesday - aug 10	thursday - aug 11	friday - aug 12
Teacher INSET		First Day: New students & Gr6	Pfarrang Students Visit	
Admission Enrolment Day		Day 8	Day 1	Day 2
			First Day: All students	Student visitation - Culley Harrington
				PYP welcome assembly am
				MYP/DP Welcome Assembly pm

RECENT MESSAGES

AUG 09 Contribution to Staff Social Club**AUG 09** TGIF @ RFG Chen's Bar (Welcome drinks)**AUG 09** Faculty Absences for today**AUG 08** 2016-2017 stationery distribution timetable**AUG 04** Welcome Breakfast**AUG 03** Invitation to the BBQ Brunch (Sunday 7th August 2016 12:45 - 14:00 at NIS)

PORTAL LINKS

[Update My Household Profile →](#)[My Invoices →](#)[NIS Website](#)[After School Activities
Catalog](#)[Library Subscription
Databases](#)[Student Classes & Reports](#)[Recent Class Updates](#)

All Children

Harris



ATTENDANCE

PYP Semester 1 · PYP Semester 2

PROGRESS REPORTS

PYP Quarter 1

REPORT CARDS

PYP Semester 1 · PYP Semester 2

LINKS

[Activities Schedule](#)[Current Class Schedule →](#)

CURRENT LOCATION

(Summer)

Keys to Communication @ NIS

- Your Children...
- Veracross
- Weekly Bulletin and WeChat
- Parent Coffees (Tech-16/8 Wednesday)
- Conferences (PLCs-22/8 Tuesday)
- [NIS Website](#)





Advisory Basics...

- Mixed Grade Levels 6/7, 8/9, and 10-12
- By House
- 10-12 Students per Advisory
- Meet everyday (regular and extended)
- Goals: Cool, Community, Communication
- PLC focus (22/8-Advisors Only)



A bit about our counseling program...



Gretchen Galaty

Counseling

Upper School Counselor

College Counselor



Counselor's Corner. [Picture]. Retrieved from <http://SACS.K12.in.us>



Kris Bezzerides

Counseling

Middle School Counselor



NanJing International School
An **Inclusive Learning Community**

Inspiring International Mindedness,
Personal Excellence, Creative Thinking

- **Head of Upper School (Grades 10-12): Dr. Juan Saavedra**

- juansaavedra@nanjing-school.com



Juan Saavedra
SET
Head of Upper School 10-12
Dr. Vel Med, La Salle University, Colombia

- **Upper School Counselor (Grades 10-12): Mrs. Gretchen Galaty**

- gretchengalaty@nanjing-school.com



Gretchen Galaty
9-12 Counselor
M.Ed., State University of New York, USA

- **Head of Middle School (Grades 6-9): Mr. Kasson Bratton**

- kassonbratton@nanjing-school.com



Kasson Bratton
SET

- **Primary/Middle School Counselor (Grades 6-9) Ms. Kris Bezzerides**

- krisbezzerrides@nanjing-school.com



Kris Bezzerides
Learning Support
K-8 Counselor
MA of Education (School Counseling), University of
Massachusetts, USA



Nanjing International School
An **Inclusive Learning Community**

Inspiring International Mindedness,
Personal Excellence, Creative Thinking



Inspiring

An **Inclusive**
Learning
Community

International Mindedness
Personal Excellence
Creative Thinking



Let's Burst the Bubble

Nanjing International School will create opportunities so every student has the confidence to engage with China beyond the walls of the school.



Download the full story of the

Available in iBooks, Kindle or PDF
<http://www.nischina.org/>



Let's Put Student Voice and Choice at the Centre of Things

Nanjing International School will be one of the best schools in Asia, where each and every student creates their own learning plan.



Nanjing International School
An **Inclusive Learning Community**

Inspiring International Mindedness,
Personal Excellence, Creative Thinking

1. Please head to
the NIS Café
2. Library foyer @
10:15am

